

# **LED Codex Arundo Power**



**2020**

**Arundo Power Limited**

# Arundo Power Limited

LED Solutions for:  
Urban  
Industry  
High tower  
Sport infrastructure

IoT Solutions for:  
Urban  
Industry  
High tower  
Sport infrastructure

# LED Solutions for Urban Industry High tower Sport infrastructure

# IoT Solutions for Urban Industry High tower Sport infrastructure

## It's time to save energy!

Arundo Power Limited is known for controlling every technical detail. Through this way of working, we succeed in producing lighting that works flawlessly for years.

In 2020 we will aim for high efficiency (total efficiency minimum 160 lm / W) ... because this is the only way for your end customer to save on the energy bill!

Our projectors received a thorough upgrade: much higher efficiency, drivers at distance, easier installation, no side light, ...

Furthermore, we focus on urban lighting with intelligence. Smart City is closer than ever. Cities want to control and monitor their energy consumption to reduce the Total Cost of Ownership. As an extra important function, data mining becomes important and that's what it's all about: big data ...

We believe that reducing energy consumption and producing your energy will become increasingly important in the near future!

As always - you as our preferred customer - you can count on implicit quality and service.

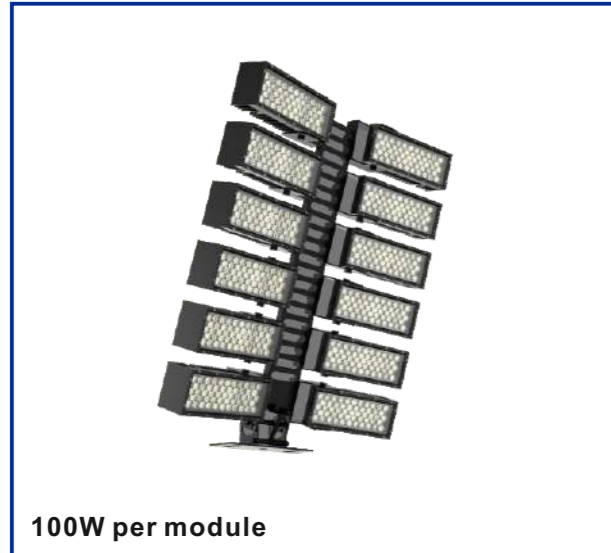
The Arundo Power Team

## Warranty:

All our products have a guarantee of 5 years. This means that in the event of a failure, we will replace or repair the product at our cost. We will provide repair service, technical support and supply all necessary spare parts.

## Preferred partners:





100W per module

### Eagle T serie

**General product features:**

Class II	IP 66	IK 10	CRI >80	<b>160 lm/W</b>
PF >0.95	Tmin -30°C	Tmax 50°C	Lumi leds	5050 chip
CE	RoHS	UL	5 years guarantee	



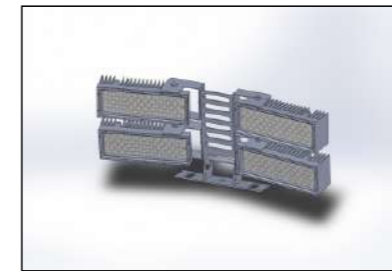
**Product description:**

This stadium light has modules of 100W. Each module can be rotated in horizontal and vertical direction to adjust the angle to create a maximum light uniformity. The beam angle of each individual module can be changed between 15° and 120°. Available angles are: 15°, 25°, 30°, 45°, 60°, 90°, 120°. The efficiency of the total fixture is the highest on the market. Integration of an intelligent module to control, monitor and measure is optional.

Applications: soccer fields, baseball fields, cricket court, tennis court, ice hockey playing field and high tower for hippodrome, ...

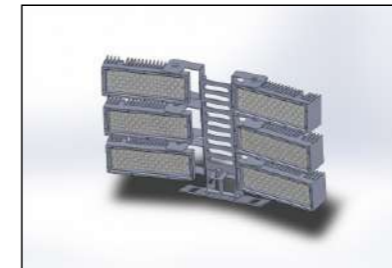
**Product features:**

Input voltage range: 90-305 VAC / 50-60 Hz  
 Power factor >0.95  
 Lumileds chips  
 Color temperature from 2700K to 6500K, standard CCT: 5700K and 4000K  
 Total luminous efficiency fixture: 160 lm/W  
 Light beam angle: 15° - 25° - 30° - 45° - 60° - 90° - 120°  
 Safety class II  
 IP 66 - IK 10  
 Working temperature: -30°C to 50°C  
 Driver on fixture or on distance (maximum 30m)  
 Dimmable with IoT module (and APP) as option  
 5 years guarantee



#### Eagle T400

Power consumption: 400W  
 Lumen output: 64 000 lm  
 Width: 730 mm  
 Length: 100 mm  
 Height: 326 mm  
 Weight: 11.6 kg  
 Article: 1010400



#### Eagle T600

Power consumption: 600W  
 Lumen output: 96 000 lm  
 Width: 730 mm  
 Length: 100 mm  
 Height: 470 mm  
 Weight: 17.0 kg  
 Article: 1010600



#### Eagle T800

Power consumption: 800W  
 Lumen output: 128 000 lm  
 Width: 730 mm  
 Length: 100 mm  
 Height: 615 mm  
 Weight: 22.3 kg  
 Article: 1010800



#### Eagle T1000

Power consumption: 1 000W  
 Lumen output: 160 000 lm  
 Width: 730 mm  
 Length: 100 mm  
 Height: 760 mm  
 Weight: 27.4 kg  
 Article: 1011000



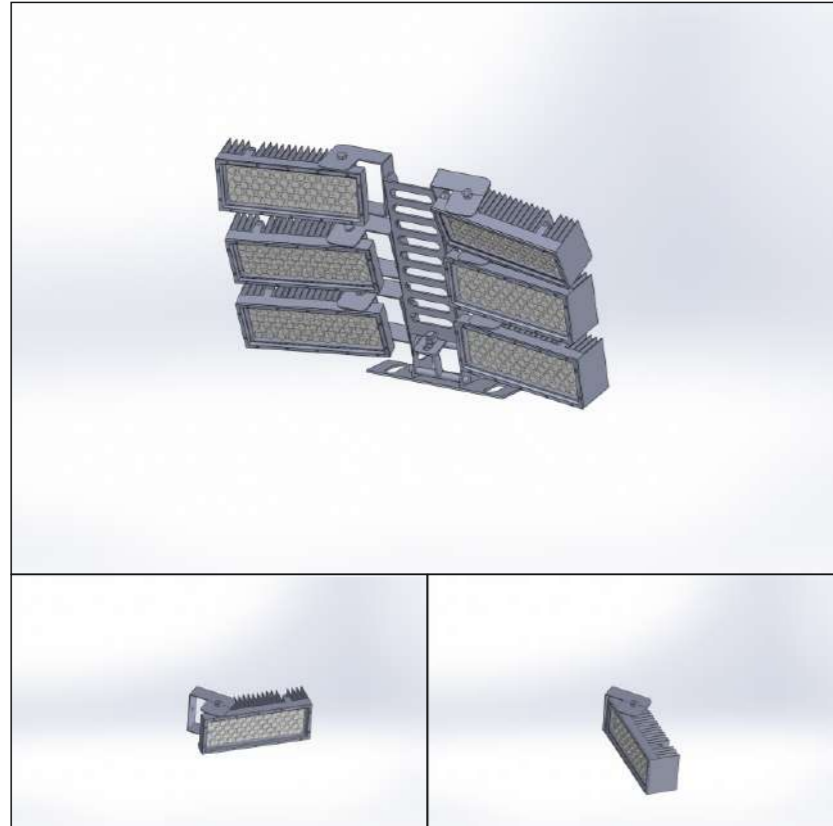
#### Eagle T1200

Power consumption: 1 200W  
 Lumen output: 192 000 lm  
 Width: 730 mm  
 Length: 100 mm  
 Height: 905 mm  
 Weight: 32.7 kg  
 Article: 1011200



#### Eagle T1400

Power consumption: 1 400W  
 Lumen output: 224 000 lm  
 Width: 730 mm  
 Length: 100 mm  
 Height: 1 045 mm  
 Weight: 44.5 kg  
 Article: 1011400

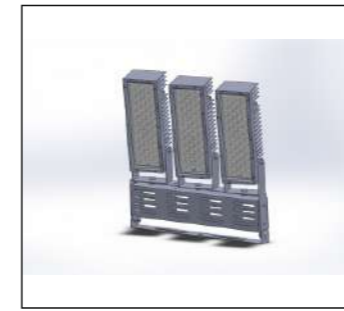


Each individual module can be rotated to focus on the theoretical point of the light study.

This method guarantees a uniform luminosity on the projected area.

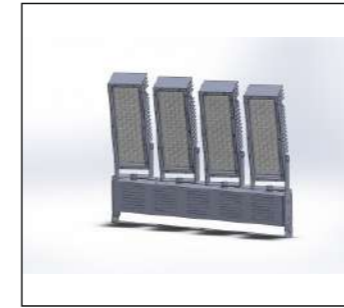
Turning angle: -45° to +45°

Turning angle: 150°



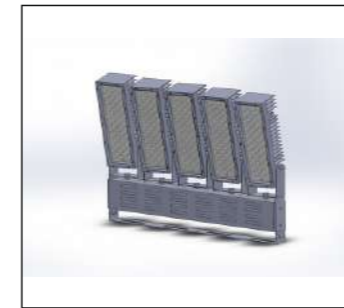
**Eagle T300**

Power consumption: 300W  
Lumen output: 48 000 lm  
Width: 80 mm  
Length: 450 mm  
Height: 470 mm  
Weight: 9.9 kg  
Article: 1020300



**Eagle T400 bis**

Power consumption: 400W  
Lumen output: 64 000 lm  
Width: 80 mm  
Length: 615 mm  
Height: 470 mm  
Weight: 16.3 kg  
Article: 1020401

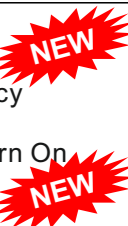


**Eagle T500**

Power consumption: 500W  
Lumen output: 80 000 lm  
Width: 80 mm  
Length: 774 mm  
Height: 470 mm  
Weight: 24.3 kg  
Article: 1020500

**Efficiency**

Each component was carefully selected to guarantee a long lifetime and a maximum efficiency (due to under driving each chip). From this moment on the replacement of existing fixtures by our LED fixtures will give a Return On Investment!

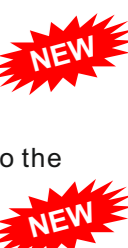


**Drivers**

The drivers work on a high DC voltage which gives us the possibility to put the drivers at longer distance (maximum 30m) while losing less than 3% power. There is only 1 cable going between all the drivers and the fixture which makes the installation much easier. If there would be a problem, the driver can easily be put below which allows easy access.

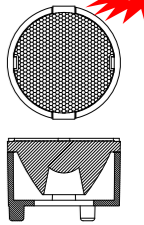
**IoT module**

We care about the future... Therefore we created our own Intelligent Module which has the possibility to switch ON/OFF, dimming, measure power consumption, ... Beside these features, groups can be made to control the fixtures and scenes can be added to the free APP. Finally, we support your IoT environment by creating the possibility to add any 'Thing'. Please check our catalogue for more information.



**No side light**

The new design avoids that light contamination due to side light. The PCB board which is incubated into the heatsink and together with the special lenses the problem of side light is completely vanished.





100W per module

### Eagle E serie

**General product features:**

Class II	IP 66	IK 10	CRI >80	<b>160 lm/W</b>
PF >0.95	Tmin -30°C	Tmax 50°C	Lumi LEDS	5050 chip
CE	RoHS	UL	5 years guarantee	



**Product description:**

This stadium light has modules of 100W. The beam angle of each individual module can be changed between 15° and 120°.

Available angles are: 15°, 25°, 30°, 45°, 60°, 90°, 120°

The efficiency of the total fixture is the highest on the market.

Integration of an intelligent module to control, monitor and measure is optional.

Applications: soccer fields, baseball fields, cricket court, tennis court, ice hockey playing field and high tower for hippodrome, ...

**Product features:**

Input voltage range: 90-305 VAC / 50-60 Hz

Power factor >0.95

Lumileds chips

Color temperature from 2700K to 6500K, standard CCT: 5700K and 4000K

Total luminous efficiency fixture : 160 lm/W

Light beam angle: 15° - 25° - 30° - 45° - 60° - 90° - 120°

Safety class II

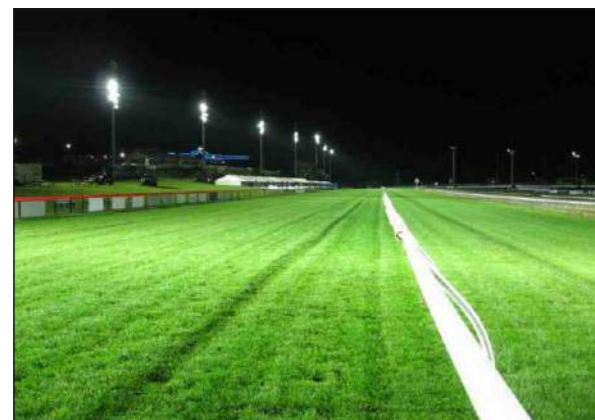
IP 66 - IK 10

Working temperature: -30°C to 50°C

Driver on fixture or on distance (maximum 30m)

Dimmable with IoT module (and APP) as option

5 years guarantee



### Eagle E200

Power consumption: 200W  
Lumen output: 32 000 lm  
Width: 90 mm  
Length: 346 mm  
Height: 290 mm  
Weight: 7.9 kg  
Article: 1030200



### Eagle E300

Power consumption: 300W  
Lumen output: 48 000 lm  
Width: 90 mm  
Length: 346 mm  
Height: 390 mm  
Weight: 10.0 kg  
Article: 1030300



### Eagle E400 bis

Power consumption: 400W  
Lumen output: 64 000 lm  
Width: 90 mm  
Length: 346 mm  
Height: 545 mm  
Weight: 15 kg  
Article: 1030400



### Eagle E400

Power consumption: 400W  
Lumen output: 64 000 lm  
Width: 90 mm  
Length: 654 mm  
Height: 325 mm  
Weight: 14.6 kg  
Article: 1030401



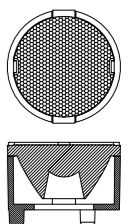
### Eagle E500

Power consumption: 500W  
Lumen output: 80 000 lm  
Width: 90 mm  
Length: 346 mm  
Height: 655 mm  
Weight: 15 kg  
Article: 1030500



**No side light**

The new design avoids that light contamination due to side light. The PCB board which is incubated into the heatsink and together with the special lenses the problem of side light is completely vanished.





**Efficiency**

Each component was carefully selected to guarantee a long lifetime and a maximum efficiency (due to under driving each chip). From this moment on the replacement of existing fixtures by our LED fixtures will give a Return On Investment!



**Drivers**

The drivers work on a high DC voltage which gives us the possibility to put the drivers at longer distance (maximum 30m) while losing less than 3% power. There is only 1 cable going between all the drivers and the fixture which makes the installation much easier. If there would be a problem, the driver can easily be put below which allows easy access.



**IoT module**

We care about the future... Therefore we created our own Intelligent Module which has the possibility to switch ON/OFF, dimming, measure power consumption, ... Beside these features, groups can be made to control the fixtures and scenes can be added to the free APP. Finally, we support your IoT environment by creating the possibility to add any 'Thing'. Please check our catalogue for more information.



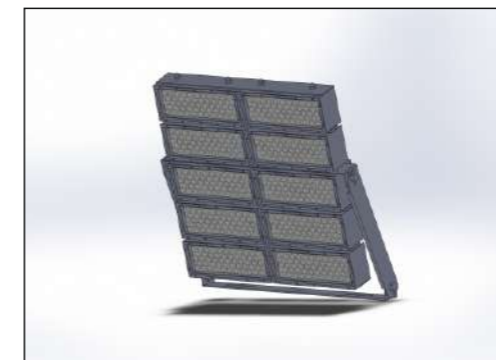
**Eagle E600**

Power consumption: 600W  
Lumen output: 96 000 lm  
Width: 90 mm  
Length: 654 mm  
Height: 390 mm  
Weight: 19.0 kg  
Article: 1030600



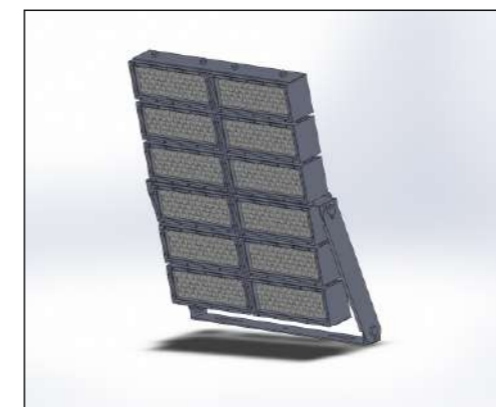
**Eagle E800**

Power consumption: 800W  
Lumen output: 128 000 lm  
Width: 90 mm  
Length: 654 mm  
Height: 550 mm  
Weight: 23.9 kg  
Article: 1030800



**Eagle E1000**

Power consumption: 1 000W  
Lumen output: 160 000 lm  
Width: 90 mm  
Length: 654 mm  
Height: 652 mm  
Weight: 28.7 kg  
Article: 1031000



**Eagle 1200**

Power consumption: 1 200W  
Lumen output: 192 000 lm  
Width: 90 mm  
Length: 654 mm  
Height: 775 mm  
Weight: 33.2 kg  
Article: 1031200



### Inagrit - Stadium

**General product features:**

The intelligent module consist of a UV - resistant box (with an internal or external antenna) IP67 protected, which will be mounted on a lighting fixture.

Each project will have minimum 1 gateway module and several nodes which can be controlled through an APP on android or Iphone.

**Product description:**

An intelligent system gives the possibility to do monitoring, controlling and data mining. It is connected to any of our lighting fixtures and has several standard features like smart metering (monitor power consumption), dimming control (manual or by shuffle bar), LoRa device (communication with other devices and gateway), WiFi (to stream camera images), motion control input (to control the light), audio input on the gateway(to trigger the light through sound). All these functions are controlled through an APP and/or through a monitoring platform.

The sky is the limit if it comes to the possibilities. Any kind of sensor can be connected with the CAN bus and be monitored from distance.

**Product features:**

- Modem connection demon (able to connect and reconnect to network)
- Routing between Ethernet port and 3G/4G network
- Cloud agent to connect to device cloud (MQTT protocol)
- Input voltage range: 100 - 240 VAC / 50-60 Hz (on grid) or 9 - 36 VDC (for off grid)
- Maximum switching power: 2kW
- Output signal dimming: 0 - 10 VDC
- Communication range with internal antenna: 1 km or external antenna: between 3 and 5 km



**System description:**

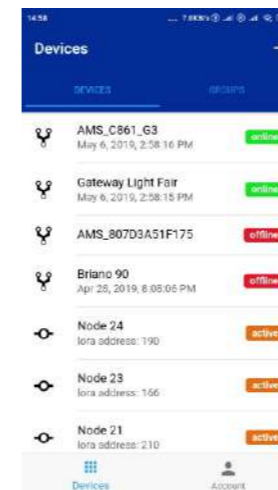


The most standard configuration is a gateway (which works like a concentrator) and one or more groups of nodes.

The gateway is connected to the cloud through a local WiFi, a local WiFi hotspot or on request through 3G/4G network, POE connector. A WiFi Manager makes it possible to switch to the network of choice.

Each node is scanned and connected through LoRa network with the gateway. During operations, the measured information can be requested or a command can be given through the gateway.

**Application (short description)**



The application gives an overview of the gateway(s) and the nodes installed in a specific project. With a color notification, a user can see clearly if a gateway or node is up and running.

Each node can be monitored regarding to energy consumption in real time by measurement of voltage, current, cos phi and wattage.

A node can be remotely dimmed with a shuffle bar or giving in a value. In addition, the power can be switched on or off.

A group of devices can be created to control several nodes at the same time. Setting up or changing these settings can be done in minutes.

In a later phase, "Scenes" will be added to select a preset configuration by a predefined user (for example: a dimming value for a football court for a trainer).







### Ceto

**General product features:**

Class II	IP 66	IK 10	CRI >80	<b>180 lm/W</b>
PF >0.9	Tmin -30°C	Tmax 50°C	Lumi LEDS	5050 chip
CE	RoHS	UL	5 years guarantee	



**Product description:**

This modular flood light has a power range of 90W and 180W and is used to replace traditional discharge lamps and fluorescent tubes on high ceilings. Due to the high lumen efficiency of 165 lm/W, it has a short payback time. The fixture is available in 7 angles: 15° - 25° - 30° - 45° - 60° - 90° - 120° and has a standard 3 in 1 dimmable driver (1-10VDC, 10V PWM or resistance). With an intelligent module as option, the light fixture can be switched ON/OFF or dimmed from distance. Groups can be made and Scenes can be selected.

Applications: warehouse, high tower, high ceiling shopping malls, churches, gyms

**Product features:**

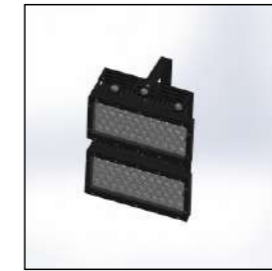
Input voltage range: 95 - 305 VAC / 50-60 Hz  
 Power factor >0.95  
 3 in 1 dimmable driver (1-10VDC, 10V PWM or resistance)  
 Color temperature: 3000K - 4000K - 5000K - 6000K, standard CCT: 4000K  
 Total luminous efficiency (without lens 120°): 180 lm/W- efficiency with lens: 160 lm/W  
 Light beam angle: 15° - 25° - 30° - 45° - 60° - 90° - 120°  
 Safety class II  
 IP 66 - IK 10  
 Working temperature: -30°C to 50°C  
 Intelligent module (optional)

5 years guarantee



### Ceto 90

Power consumption: 90W  
 Lumen output: 16 200 lm  
 Width: 130 mm  
 Length: 288 mm  
 Height: 128 mm  
 Weight: 3.0 kg  
 Article: 2080090



### Ceto 180 square

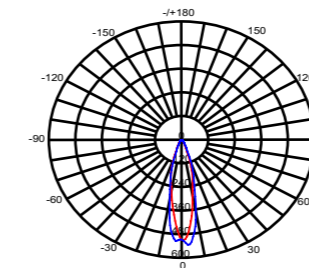
Power consumption: 180W  
 Lumen output: 32 400 lm  
 Width: 246 mm  
 Length: 288 mm  
 Height: 128 mm  
 Weight: 6.5 kg  
 Article: 2080180



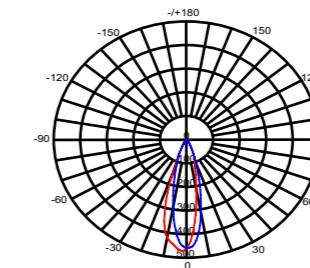
### Ceto 180 rectangular

Power consumption: 180W  
 Lumen output: 32 400 lm  
 Width: 130 mm  
 Length: 575 mm  
 Height: 128 mm  
 Weight: 6.6 kg  
 Article: 2080181

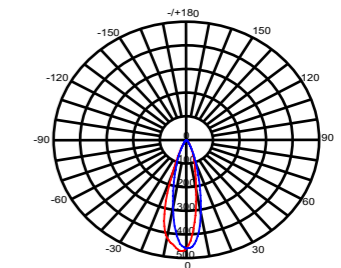
**Light distribution curves**



15° angle



25° angle

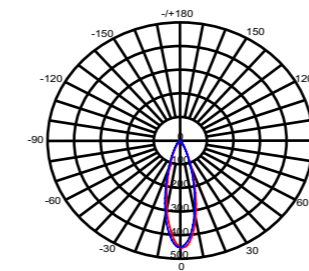


30° angle

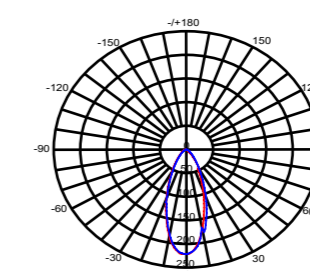
Unit : cd

Unit : cd

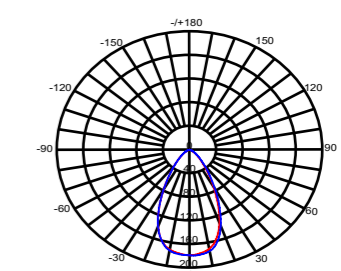
Unit : cd



45° angle



60° angle

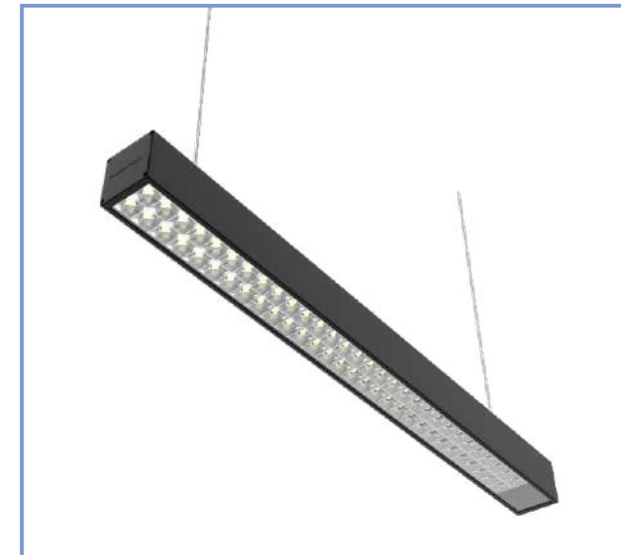


90° angle

Unit : cd

Unit : cd

Unit : cd



## Linara Big

### General product features:

Class II	IP 65	IK 10	CRI >80	<b>190 lm/W</b>
PF >0.9	Tmin -30°C	Tmax 50°C	<b>UGR &lt;19</b>	5050 chip
CE	RoHS	UL	5 years guarantee	



### Product description:

This linear high bay has a power range of 75W or 150W and is used to replace traditional lighting on high ceilings in racks. Due to the high lumen efficiency of 180 lm/W, it has a short payback time.

The fixture can be mounted against a surface (wall or ceiling) with a bracket or pending from the ceiling with a cable. As extra feature it can be fitted with a KBA or KBB profile of Schneider Electric.

The fixture has an asymmetric angle of 40° / 65° and a special structure reflector to avoid glare which can be a crucial issue in a corridor of racks. UGR is lower than 15.

The Linara a standard 3 in 1 dimmable driver 0-10VDC which is controlled by an IoT module. This intelligent module can through an APP group fixtures and turn them off or dim them from distance through LoRa technology.

Applications: warehouse, high ceiling shopping malls, churches, gyms.

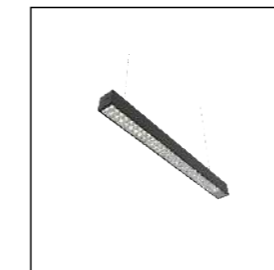
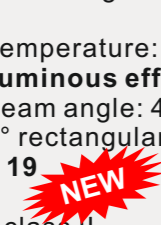
### Product features:

Input voltage range: 95 - 305 VAC / 50-60 Hz  
 Power factor >0.95  
 3 in 1 dimmable driver (0-10VDC)  
 IoT module inside to connect motion sensor or other sensors through CANBUS  
 APP available to control group or individual dimming and on/off  
 Power metering inside

Color temperature: 3000K - 4000K - 5000K - 6000K  
**Total luminous efficiency: >180 lm/W** (the chip set is 230 lm/W)  
 Light beam angle: 40° flood (190 lm/W) - 60° flood (190 lm/W) - 55° square (180 lm/W) - 40°/65° rectangular (180 lm/W)  
**UGR < 19**

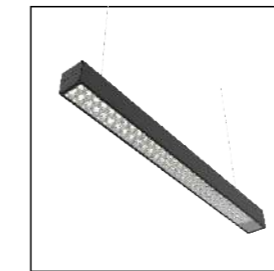
Safety class II  
 IP 65 - IK 10  
 Working temperature: -30°C to 50°C  
 Color housing: black structure coating (other colors on demand)

5 years guarantee



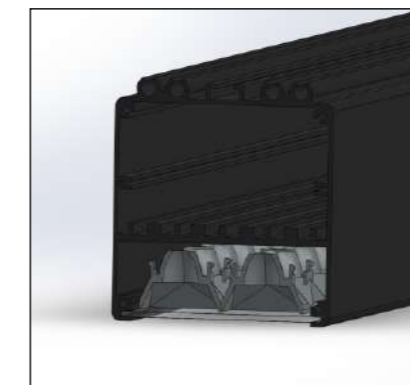
## Linara Big 65

Power consumption: 65W  
 Lumen output: 11 700 lm  
 Width: 80 mm  
 Length: 1 280 mm  
 Height: 85 mm  
 Weight: 3,8 kg  
 Article: 2090065



## Linara Big 130

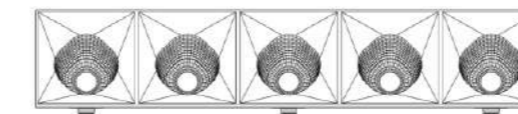
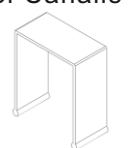
Power consumption: 130W  
 Lumen output: 23 400 lm  
 Width: 80 mm  
 Length: 2 200 mm  
 Height: 85 mm  
 Weight: 5 kg  
 Article: 2090130



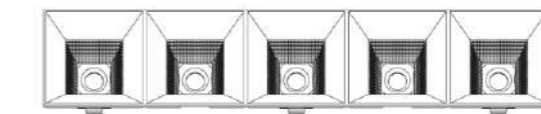
The profile extrusion has a separate level for the driver to avoid contact with the heat dissipation surface of the PCB.

Sealed tempered glass and a cover with rubber ring assure the IP rating.

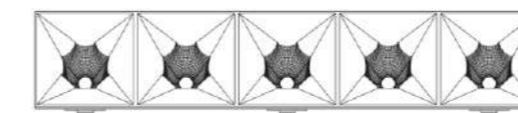
Any kind of suspension of clamp holder can be integrated according to customer request. Standard clips for Canalis system KBA and KBB of Schneider Electric is available.



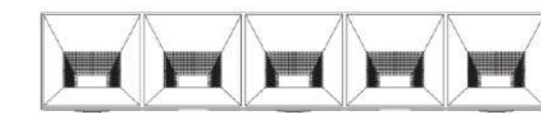
40° flood



55° square



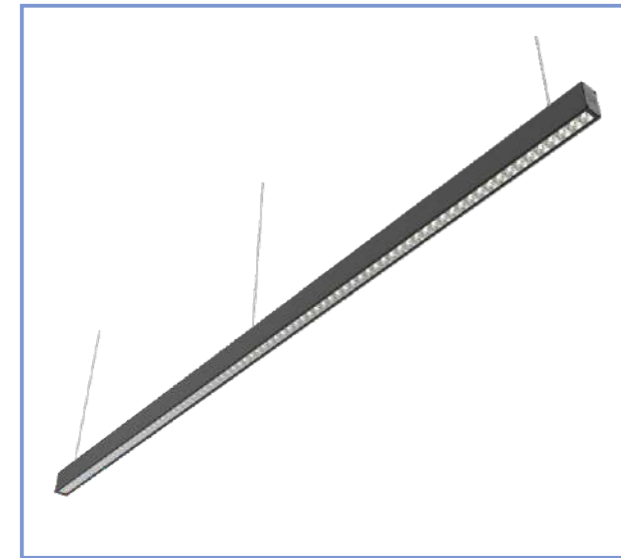
60° flood



40°/65° rectangular

These special reflectors have the capability to reduce the glare to minimum level while the total lumen efficiency stays high.





### Linara Small

**General product features:**

Class II	IP 44	IK 08	CRI >80	<b>180 lm/W</b>
PF >0.9	Tmin -30°C	Tmax 50°C	<b>UGR &lt;19</b>	5050 chip
CE	RoHS	UL	5 years guarantee	



**Product description:**  
 This linear high bay has a power range of 75W or 150W and is used to replace traditional lighting on high ceilings in racks. Due to the high lumen efficiency of 180 lm/W, it has a short payback time.

The fixture has to be pended from the ceiling with a cable. As extra feature it can be fitted with a KBA or KBB profile of Schneider Electric. The idea is to create an endless light line.

The fixture has an asymmetric angle of 40°/ 65° and a special structure reflector to avoid glare which can be a crucial issue in a corridor of racks. UGR is lower than 15.

The Linara has a standard 3 in 1 dimmable driver 0-10VDC which is controlled by an IoT module. This intelligent module can through an APP group fixtures and turn them off or dim them from distance through LoRa technology.

As extra option the line can be tunable white on request.

Applications: warehouse, shopping malls, churches, ...

**Product features:**  
 Input voltage range: 95 - 305 VAC / 50-60 Hz  
 Power factor >0.95  
 3 in 1 dimmable driver (0-10VDC)  
 IoT module inside to connect motion sensor or other sensors through CANBUS  
 APP available to control group or individual dimming and on/off  
 Power metering inside

Color temperature: 3000K - 4000K - 5000K - 6000K or tuneable white: 2700 to 6500K  
 Luminous efficiency: 180 lm/W (chip set is 235 lm/W)  
 Light beam angle: 40° flood - 60° flood - 55° square - 40°/65° rectangular  
**UGR < 19**

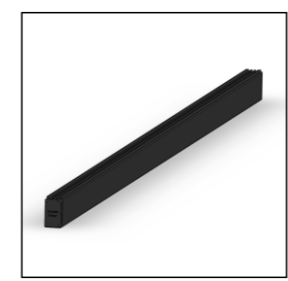
**NEW**

Safety class II  
 IP 44 - IK 10  
 Working temperature: -30°C to 50°C  
 Color housing: white structure coating (other colors on demand)

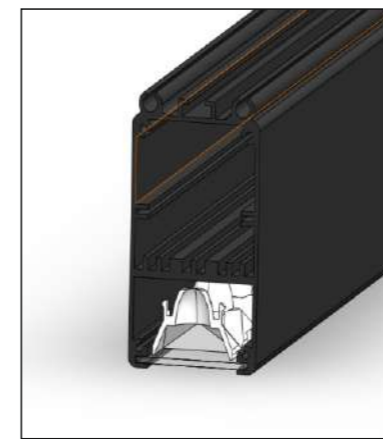
5 years guarantee



**Linara Small 40**  
 Power consumption: 40W  
 Lumen output: 7 200 lm  
 Width: 48 mm  
 Length: 1 200 mm  
 Height: 85 mm  
 Weight: 2,7 kg  
 Article: 2091040



**Linara Small 80**  
 Power consumption: 80W  
 Lumen output: 14 400 lm  
 Width: 48 mm  
 Length: 2 400 mm  
 Height: 85 mm  
 Weight: 5,4 kg  
 Article: 2071080

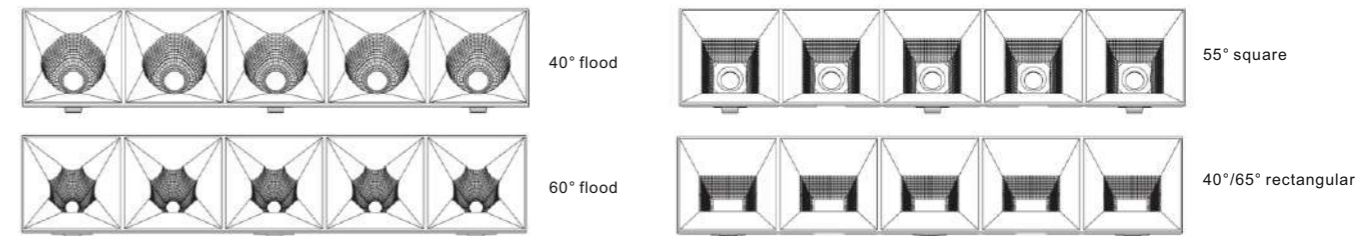


The profile extrusion has a separate level for the driver to avoid contact with the heat dissipation surface of the PCB.

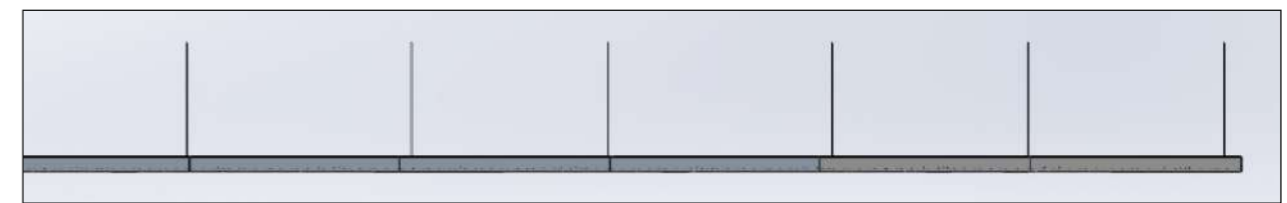
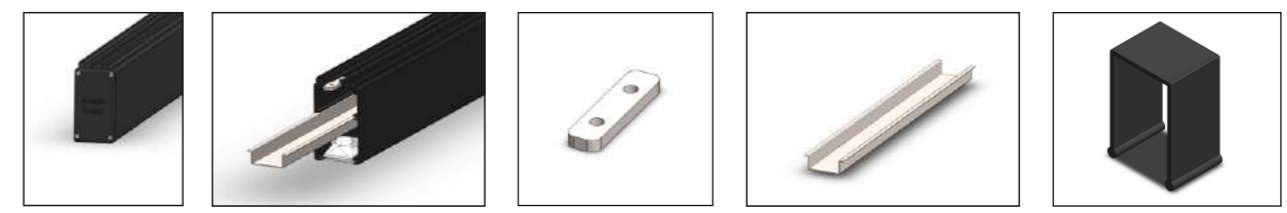
The tempered glass avoid early contamination of the high efficiency reflectors.

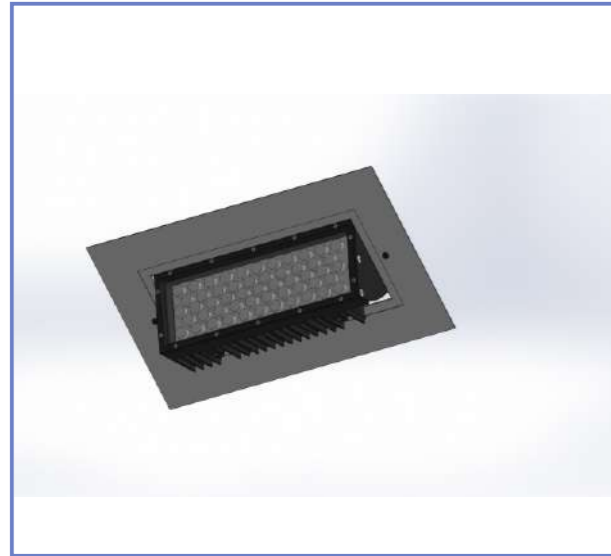
Any kind of suspension of clamp holder can be integrated according to customer request. Standard clips for Canalis KBA of Schneider Electric is available

The joint piece to close the junction and the holder can connect 2 profiles to create an endless light line. There is no limit to the amount of fixtures which can be connected. Suspension cable needed every 3 meter.



These special reflectors have the capability to reduce the glare to minimum level while the total lumen efficiency stays high.





## Scopi

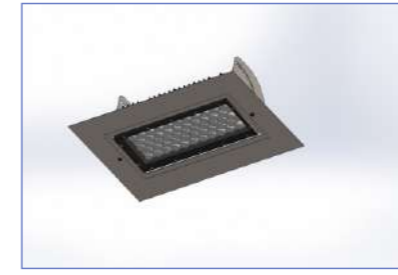
### General product features:

Class II	IP 44	IK 08	CRI >94	170 lm/W
PF >0.9	Tmin -30°C	Tmax 50°C	Lumi LEDS	chip 5050
CE	RoHS	UL	5 years guarantee	



**Product description:**  
 This light fixture is designed to use in a shopping mall. Especially in the shop window, these lights burn day and night (for advertising purposes and safety). The cover plate can be a customised dimension to cover the cut out hole in the ceiling completely. Standard color is white but other colors are optional. The color rendering is from very high importance and is higher than 90.  
 Applications: shopping mall, shop window

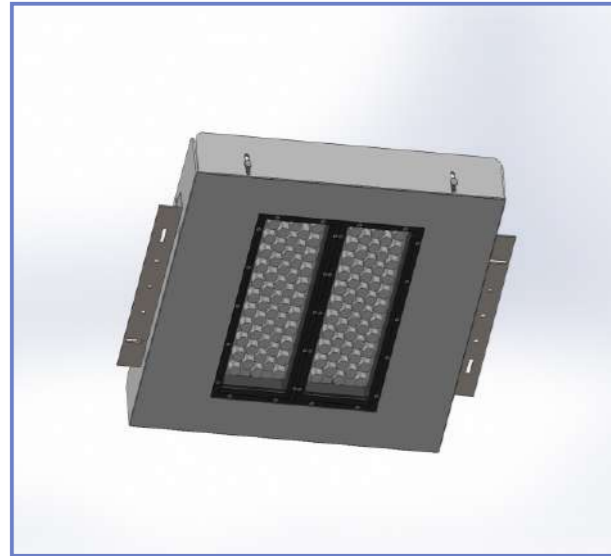
**Product features:**  
 Input voltage range: 100 - 240 VAC / 50-60 Hz  
 Power factor >0.98  
 Color temperature: 3000K - 4000K - 5000K - 6000K  
 Total luminous efficiency (without lens): 170 lm/W - with lens: 150 lm/W  
 Light beam angle: 15°, 25°, 30°, 45°, 60°, 90°, 120°  
 Safety class II  
 IP 44 - IK 08 - CRI>94  
 Working temperature: -30°C - 50°C  
 Controlled with an IoT module as option  
 5 years guarantee



**Scopi 90**  
 Power consumption: 90W  
 Lumen output: 15 300 lm  
 Width: 415 mm  
 Length: 245 mm  
 Height: 130 mm  
 Weight: 4.1 kg  
 Article: 6020090



Without cover plate:  
 Width: 355 mm  
 Length: 180 mm  
 Height: 128 mm



## Scalco

### General product features:

Class II	IP 66	IK 10	CRI 80	<b>180 lm/W</b>
PF >0.98	Tmin -30°C	Tmax 50°C	Lumi LEDS	chip 5050
CE	RoHS	UL	5 years guarantee	



### Product description:

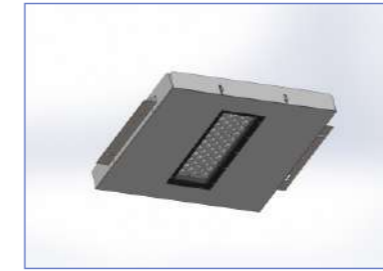
This tile is commonly used in the ceiling of a fuel station. The power range is 90W or 180W. There are different angles available depending on the height of the ceiling: 15°, 25°, 30°, 45°, 60°, 90°, 120°. There are 2 models: recessed (with cover plate) or mounted (with box). The standard color of the framework is white other colors are optional.

Applications: Fuel stations, shelter

### Product features:

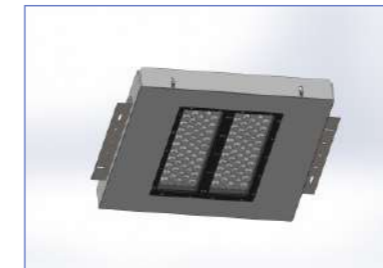
Input voltage range: 100 - 240 VAC / 50-60 Hz  
 Power factor >0.98  
 Color temperature: 3000K - 4000K - 5000K - 6000K  
 Total luminous efficiency: 180 lm/W (without lens) - 160 lm/W (with lens)  
 Light beam angle: 25° - 60° - 90° - 160°  
 Safety class II  
 IP 66 - IK 10 - CRI>80  
 Working temperature: -30°C - 50°C

5 years guarantee



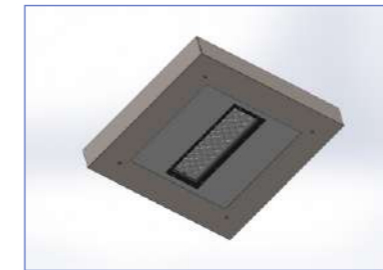
### Scalco 90 recessed

Power consumption: 90 W  
 Lumen output: 16 200 lm  
 Width: 400 mm  
 Length: 400 mm  
 Height: 82 mm  
 Weight: 7.4 kg  
 Article: 6010090



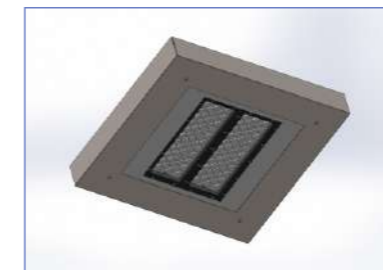
### Scalco 180 recessed

Power consumption: 180W  
 Lumen output: 32 400 lm  
 Width: 400 mm  
 Length: 400 mm  
 Height: 82 mm  
 Weight: 9.6 kg  
 Article: 6010180



### Scalco 90 mounted

Power consumption: 90W  
 Lumen output: 16 200 lm  
 Width: 480 mm  
 Length: 480 mm  
 Height: 84 mm  
 Weight: 10.7 kg  
 Article: 6010091



### Scalco 180 mounted

Power consumption: 180W  
 Lumen output: 32 400 lm  
 Width: 480 mm  
 Length: 480 mm  
 Height: 84 mm  
 Weight: 12.9 kg  
 Article: 6010181



### Briano

**General product features:**

Class II	IP 66	IK 09	CRI >70	<b>200 lm/W</b>
PF >0.95	Tmin -30°C	Tmax 50°C	Cree chip	chip 5050
CE	RoHS	UL	5 years guarantee	



**Product description:**

This street light fixture has a bracket to be mounted horizontal or vertical. The power range of this model varies from 30W to 180W. Optional is a dimmable driver (1-10VDC or DALI) and an intelligent module to control the light. Together with this comes a (microwave) motion sensor

Applications: street poles, parking places, parks, pedestrian paths

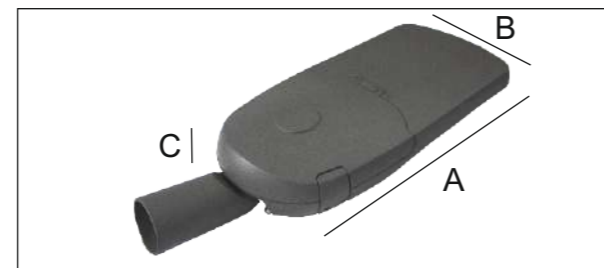
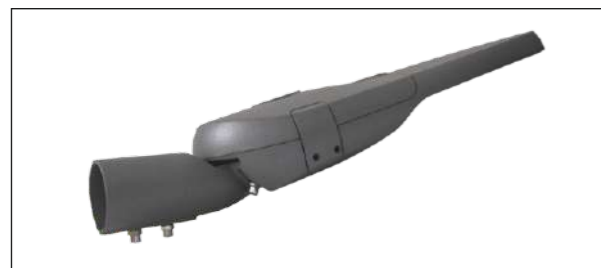
**Product features:**

Input voltage range: 90-305 VAC / 50-60 Hz  
 Power factor >0.95  
 Color temperature: 3000K - 4000K - 5000K - 6000K  
 Total luminous efficiency: 190 to 200 lm/W (depending on the wattage)  
 Light beam angle: asymmetric light beam (all types available)  
 Spigot connection: 60 mm - 0° to 90° adjustable

Safety class II  
 IP 66 - IK 09 - CRI>70  
 Working temperature: -30°C - 50°C

Options:  
 - 3 in 1 dimmable driver (1-10VDC, DALI)  
 - 10kV surge protection  
 - intelligent module with LoRa or 3G/4G

5 years guarantee



**Product dimensions:**

Article	Dimensions			Chips	Power (W)	Efficiency (lm/W)	Luminous (lm)
	A (mm)	B (mm)	C (mm)				
4060040	535	200	120	32	40	190	7600
4060060	620	235	125	48	60	190	11400
4060080	620	235	125	96	80	200	16000
4060100	620	235	125	96	100	200	20000
4060120	690	260	130	96	120	190	22800
4060150	810	320	135	160	150	200	30000
4060180	810	320	135	160	180	200	36000

**Modular lenses (efficiency 92%)**



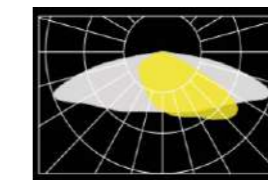
Each fixture has a number of modular lenses to achieve the power and the specific angle.

The lens is from polycarbonate material (PC) and is protected against dust and humidity by a glass cover.

**Light Distribution Curve:**



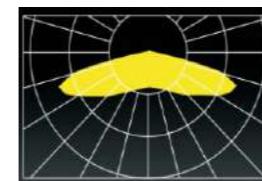
Type II - S



Type III - M



Type IV - M



Type V - M



Type IV - S



Type V - M



### Inagrit - Urban

**General product features:**

7 pin NEMA socket to attach to the top of the street light.  
3 central bajonet pins hold the intelligent module on its position with a click and turn system.

There are 2 different modules: one for on grid solutions (running on 240 VAC) and one for off grid solutions (running on 5 to 36VDC)  
The communication can be asked for 3G or 4G networks.

**Product description:**

Intelligence results in monitoring, controlling and data mining

An intelligent module is connected to any of our lighting fixtures and has several standard features like smart metering (monitor power consumption), accelerometer (theft detection), dimming control, LoRa (communication with other devices and gateway), WiFi (to stream camera images), motion control input (to control the light), audio input (to trigger the light through sound).

All these functions are controlled through an APP or through a monitoring platform

Next to these functions the sky is the limit. Any kind of sensor can be connected with the CAN bus and be monitored from distance. With the CPU module, wide band video can be streamed through WiFi or a GPRS network.

**Product features:**

- Modem connection demon (able to connect and reconnect to network)
- Routing between Ethernet port and 3G/4G network
- Cloud agent to connect to device cloud (MQTT protocol)
- Input voltage range: 100 - 240 VAC / 50-60 Hz
- Maximum switching power: 2kW
- Output signal dimming: 0 - 10 VDC



## Internet of Things (IoT)

**System description:**

The communication is made directly through the existing 3G or 4G network. This means a very secure communication which runs extremely fast and creates the possibility to upgrade -if needed- the firmware. A disadvantage is that each access point will consume a very small amount of data per month. The standard WiFi connection can be used for streaming of video images.

Each module is connected to the cloud and can be used for controlling, monitoring or data mining purposes.

There are a standard amount of functions which are slightly different for off grid and on grid. On grid will monitor the (online) energy consumption while the off grid application will focus on monitoring the battery parameters (charging, discharging, temperature, ...)

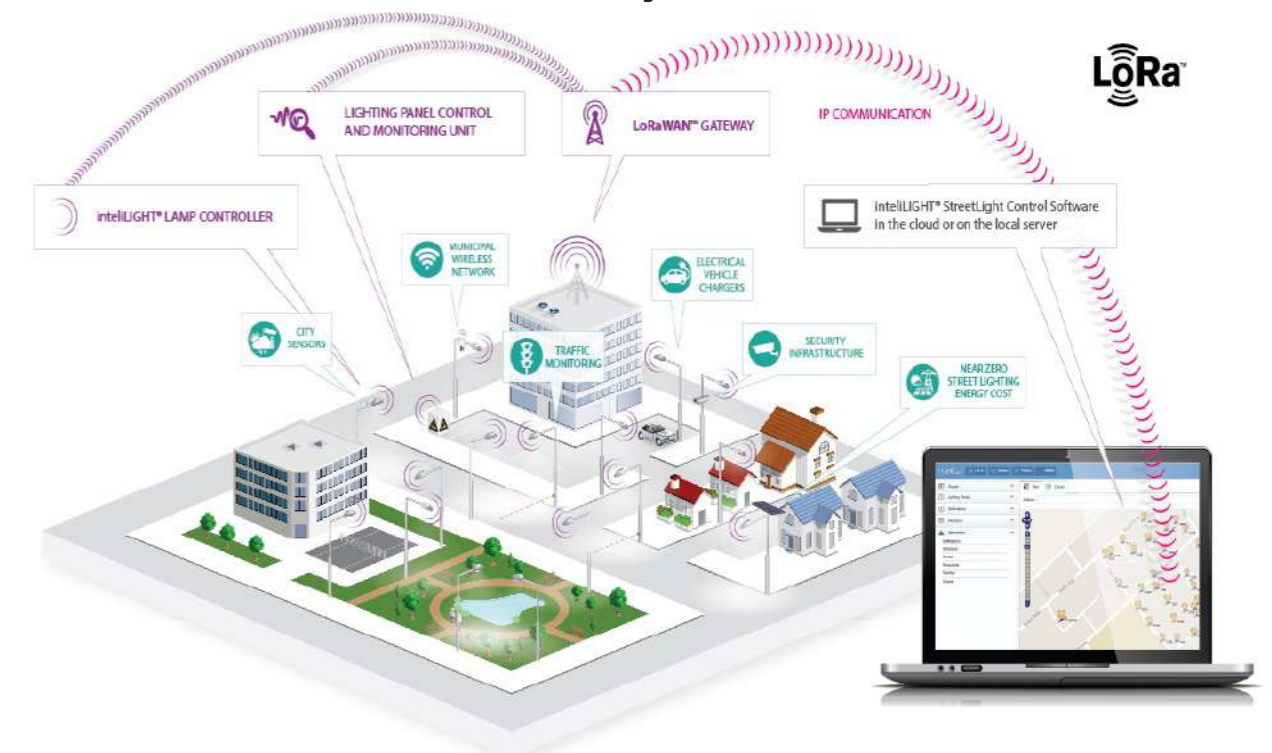
All intelligent modules can dim or power on/off the street light. Some extra nice features are the possibility to make groups (families) who will light up together based on an event (like a trigger from a motion sensor).

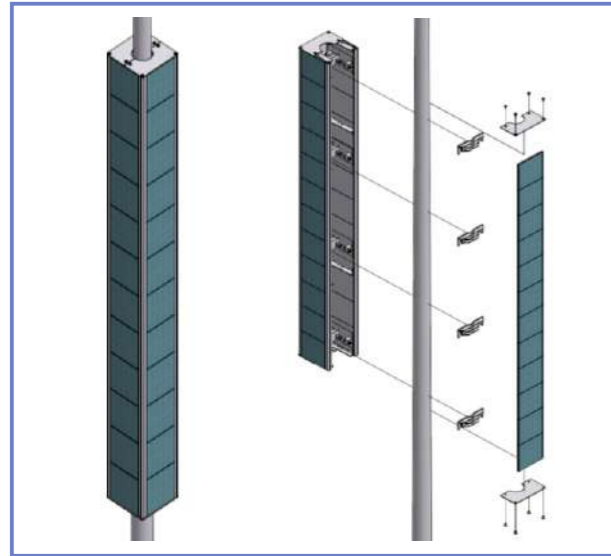
Another feature is the integration of an accelerator sensor which can detect theft while creating abnormal vibrations on the pole...

The extra input from a CAN bus gives the possibility to link an external 'thing' while there is a DC voltage connector available to supply power when needed.

A standard GP I/O is available to connect a PIR or MW motion sensor.

## Smart City Network





## Levate

### General product features:

Class III	IP 67	IK 08	CRI 70	200 lm/W
PF >0.9	Tmin -30°C	Tmax 50°C	Lumi LEDS	chip 5050
CE	RoHS	UL	5 years guarantee	

### Product description:

Off grid Intelligent Street lighting (OIS) is efficient street lighting where the energy is delivered from a battery pack which is charged during the day.

The system is controlled and monitored through an intelligent module. By preset values in time or with a motion sensor the light is switched on/off and dimmed. Each light pole is connected directly through 4G with the cloud and the network of poles is communicating through LoRa protocol over long distance (min. 3 km). This IoT module can be used to monitor any sensor.

The system contains: the street light, the intelligent module with motion sensor and I/O to add any sensor, solar panel structure, MPPT to convert sun energy, battery pack and BMS to assure a long battery lifetime.

### Advantages are:

- all poles are master and work on their own
- the system can be mounted on an existing pole
- the lighting power can be higher than a solar panel mounted on the top
- the number of possibilities with the IoT module are endless

Applications: Locations where there is no grid and where the grid is unstable, places where the solar energy is high and the demand of lighting is also high during the night

### Product features:

Isolar powered light on 24VDC battery pack  
Lithium ion battery cells: 5 years guarantee

LED modules  
Any color temperature from 3000K to 6000K  
Luminous efficiency: 200 lm/W - CRI 70

Safety class III  
IP 67 - IK 08  
Working temperature: -30°C to 50°C  
RH%: till 95%

Dimmable and time controlled light output  
Microwave sensor integrated

### Levate 40

Power consumption: 40W  
Lumen output: 8.000 lm  
Pole height: 6m  
Battery capacity: 37,5 Ah - 24V DC  
Article: 4030040

### Levate 120

Power consumption: 120W  
Lumen output: 24.000 lm  
Pole height: 10m  
Battery capacity: 75 Ah - 24V DC  
Article: 4030120

### Levate 80

Power consumption: 80W  
Lumen output: 16.000 lm  
Pole height: 8m  
Battery capacity: 50 Ah - 24V DC  
Article: 4030080

### Levate 160

Power consumption: 160W  
Lumen output: 32.000 lm  
Pole height: 12m  
Battery capacity: 100 Ah - 24V DC  
Article: 4030160







**Content**

**Page**

<b>Company introduction</b> .....	<b>p2</b>
<b>Projector lighting</b>	
Modular - Eagle T serie .....	p4
Fixed modules - Eagle E serie .....	p8
Intelligent module - Stadium lighting - Inagrit .....	p12
<b>Industrial lighting</b>	
High bay - Flood light - Ceto .....	p14
High bay - Linear light - Linara Big .....	p16
High bay - Linear light - Linara Small .....	p18
Low bay - Scoop light - Scopi .....	p20
Low bay - Canopy light - Scalò .....	p22
<b>Street lighting</b>	
On grid - Integrated - Rodi .....	p24
Intelligent module - Urban lighting - Inagrit .....	p26
Off grid - Around the pole - Levate .....	p28

# Arundo Power Limited

At your service!

Disclaimer: The content of this catalogue can be used as for your reference only. We take no responsibility for any errors printed in this document. We reserve all the rights to change the content of this catalogue.

Copyright © Arundo Power Limited

## **Arundo Power Limited**

**Address Hong Kong:**

**Rm A&B, 15/Flr, Neich Tower, 128 Gloucester Rd, Wanchai, Hong Kong**

**Address China:**

**Golden Villa Bldg, Luohu, Yanhe Lu  
Bldg 3, Fl 27, 518002 Shenzhen, P.R. China**

**Phone (Europe): +32 475 89 86 11**

**Phone (China): +86 132 2439 0451**

**Email: [bruno@arundopower.com](mailto:bruno@arundopower.com)**

**Facebook: Arundo Power**

**[www.arundopower.com](http://www.arundopower.com)**